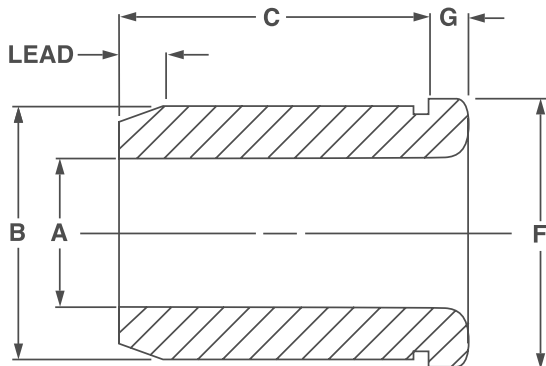


Head Press Fit Drill Bushings

HTW Type ANSI Thin Wall Bushings



KEY FEATURES

- / Diameters from 0.0156 to 1.1250
- / Hardened to 60-65 HRC
- / OD lead for easy installation
- / ID radius improves drill entry
- / OD ground to press fit size
- / Thin wall space saving feature

APPLICATION

The 'HTW Type' drill bushing has all the features of the 'H Type' but with the added

feature of a thin wall. Where space is absolute paramount, the thin wall bushing allows closer hole spacing. The head feature allows for greater axial force, so not to slip out the plate, or to feed down to a dead stop if required.

ORDERING INSTRUCTIONS

When Ordering State: Quantity, Symbol, Bore Size and whether it's a Drill or Reamer. Example: H-TW-24-6-13/64

NOTES

- / For general ordering information and technical data see pages 5-7
- / Price list codes detailed below; please see price list.



Bore Size A*	Outside Diameter B	Prefix	C: Length Under Head and Price Code Number													Head		
			1/4"	5/16"	3/8"	1/2"	5/8"	3/4"	1"	1 1/4"	1 1/2"	1 3/4"	2"	2 1/4"	Dia. F	Thk. G		
0.0135 to 0.0280	3/16	0.1891 0.1881	H-TW POA	-12-4 POA	-12-5 POA	-12-6 POA	-12-8 POA	-12-10 POA	-12-12 POA								5/16	3/32
0.0292 to 0.0591	3/16	0.1891 0.1888	H-TW POA	-12-4 POA	-12-5 POA	-12-6 POA	-12-8† POA	-12-10† POA	-12-12† POA								5/16	3/32
0.0595 to 0.0625	3/16	0.1891 0.1888	H-TW 222	-12-4 224	-12-5 224	-12-6 228	-12-8 230	-12-10* 240	-12-12* 248								5/16	3/32
0.0635 to 0.0980	3/16	0.1891 0.1888	H-TW 164	-12-4 164	-12-5 167	-12-6 170	-12-8 172	-12-10* 181	-12-12* 188								5/16	3/32
0.0995 to 0.1406	1/4	0.2516 0.2513	H-TW	-16-4 146	-16-5 152	-16-6 155	-16-8 158	-16-10 167	-16-12 183								3/8	3/32
0.1406 to 0.1910	5/16	0.3141 0.3138	H-TW	-20-4 134	-20-5 137	-20-6 140	-20-8 142	-20-10 143	-20-12 144	-20-16 159							7/16	3/32
0.1935 to 0.2280	3/8	0.3766 0.3763	H-TW	-24-4 129	-24-5 134	-24-6 135	-24-8 137	-24-10 139	-24-12 140	-24-16 153							1/2	3/32
0.2340 to 0.2900	7/16	0.4392 0.4389	H-TW	-28-4 129	-28-5 134	-28-6 135	-28-8 137	-28-10 139	-28-12 140	-28-16 153							9/16	3/32
0.2950 to 0.3437	9/16	0.5642 0.5639	H-TW	-36-4 135	-36-5 129	-36-6 134	-36-8 134	-36-10 135	-36-12 135	-36-16 140							11/16	3/32
0.3480 to 0.4375	5/8	0.6267 0.6264	H-TW		-40-5 129	-40-6 130	-40-8 130	-40-10 135	-40-12 135	-40-16 140	-40-16 166						3/4	3/32

Continued on next page



Bore Size A*	Outside Diameter B	C: Length Under Head and Price Code Number													Head		
		Prefix	1/4"	5/16"	3/8"	1/2"	5/8"	3/4"	1"	1 1/4"	1 1/2"	1 3/4"	2"	2 1/4"	Dia. F	Thk. G	
0.4531 to 0.5312	3/4	0.7518 0.7515	H-TW		-48-5 134	-48-6 135	-48-8 135	-48-10 138	-48-12 140	-48-16 146	-48-20 167					7/8	1/8
0.5469 to 0.6562	7/8	0.8768 0.8765	H-TW			-56-6 151	-56-8 149	-56-10 149	-56-12 151	-56-16 153	-56-20 161	-56-24 170				1-1/16	3/16
0.6719 to 0.7500	1	1.0018 1.0015	H-TW				-64-8 152	-64-10 152	-64-12 152	-64-16 158	-64-20 164	-64-24 187	-64-28 193			1-3/16	3/16
0.7656 to 0.8437	1-1/8	1.1270 1.1267	H-TW				-72-8 201	-72-10 194	-72-12 189	-72-16 201	-72-20 209	-72-24 218	-72-28 224			1-5/16	3/16
0.8594 to 0.9375	1-1/4	1.2520 1.2517	H-TW					-80-10 194	-80-12 191	-80-16 198	-80-20 206	-80-24 213	-80-28 221	-80-32 234		1-1/2	1/4
0.9531 to 1.000	1-3/8	1.3772 1.3768	H-TW					-88-10 193	-88-12 192	-88-16 200	-88-20 209	-88-24 214	-88-28 222	-88-32 237		1-5/8	1/4
1.0156 to 1.1250	1-1/2	1.5022 1.5018	H-TW						-96-12 225	-96-16 213	-96-20 225	-96-24 229	-96-28 234	-96-32 291	-96-36 299	1-3/4	1/4

* Standard bore sizes available are per chart shown in rear of catalog – including LETTER, NUMBER and FRACTIONAL SIZES.
MILLIMETER – from 2.3 mm to 10.5 mm only for selected list designated by on back cover.

• COUNTERBORED – with adequate bearing length – can also be supplied without counterbore upon request.

† COUNTERBORED – 0.0390 to 0.0469 with adequate bearing length; can also be supplied without counterbore upon request.

* Price on Application, prices subject to change.