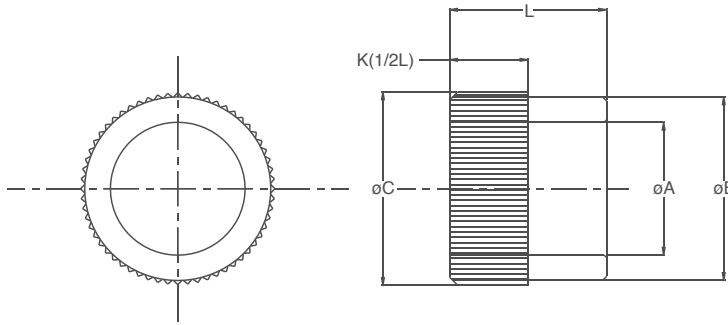


Serrata Press Fit Drill Bushings

SPM Type Serrated Metric Bushings



$$C = B + (0.35 \text{ to } 0.5 \text{ mm})$$



BONEHAM

KEY FEATURES

- / Diameters from 1.20mm to 18mm
- / ID Hardened to 60-65 HRC
- / ID radius improves drill entry
- / Top OD serrated
- / Bottom ID ground

APPLICATION

The 'SPM Type' drill bushing is similar to that of

the 'P Type' bushing, they are designed to press into soft materials, such as wood and soft metals. The top of the OD is serrated to prevent rotational movement and increased axial resistance in the jig. The rest of the bushing is finish ground to allow for accurate and easy location.

ORDERING INSTRUCTIONS

When Ordering State: Quantity, Symbol, Bore

Size. Example: 6, SPM-7-16-4MM

If ordering specials, state ID, OD and Length.

NOTES

- / For general ordering information and technical data see pages 5-7
- / Price list codes detailed below; please see price list.



Bore Size A (mm) F7		OD B (mm)	OD B Tolerance (mm)	Length L (mm)	Part Code	Price Code
From	To					
1.20	1.8	5	5.000/4.995	6	SPM-5-6	POA
				9	SPM-5-9	POA
1.80	2.6	5	5.000/4.995	6	SPM-5-6	187
				9	SPM-5-9	198
				8	SPM-6-8	160
2.61	3.3	6	6.000/5.995	12	SPM-6-12	187
				16	SPM-6-16	190
				8	SPM-7-8	143
3.31	4	7	7.000/6.995	12	SPM-7-12	152
				16	SPM-7-16	159
				8	SPM-8-8	143
4.01	5	8	8.000/7.994	12	SPM-8-12	152
				16	SPM-8-16	159
				10	SPM-10-10	139
5.01	6	10	10.000/9.994	16	SPM-10-16	148
				20	SPM-10-20	159
				10	SPM-12-10	139
				16	SPM-12-16	148
6.01	8	12	12.000/11.992	20	SPM-12-20	159
				12	SPM-15-12	134
				20	SPM-15-20	143
				25	SPM-15-25	148
8.01	10	15	15.000/14.992	12	SPM-18-12	139
				20	SPM-18-20	152
				25	SPM-18-25	160
				16	SPM-22-16	159
10.01	12	18	18.000/17.992	28	SPM-22-28	161
				36	SPM-22-36	170
				16	SPM-26-16	159
				28	SPM-26-28	161
12.01	15	22	22.000/21.991	36	SPM-26-36	170
				16	SPM-26-16	159
15.01	18	26	26.000/25.991	28	SPM-26-28	161
				36	SPM-26-36	170

*Price on Application, prices subject to change.