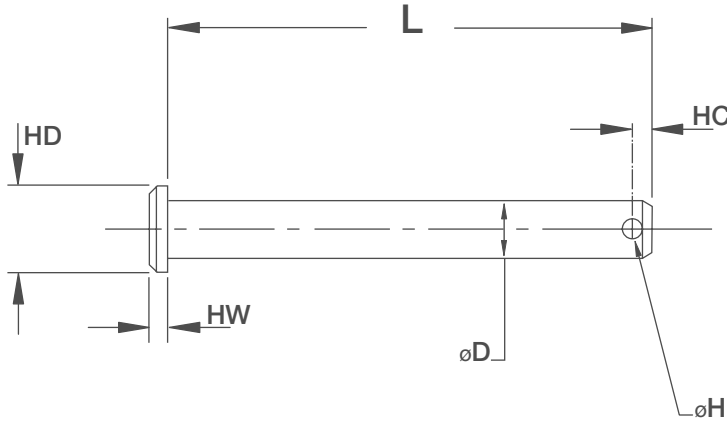


Clevis Pins

INCH Pin to ANSI Sizes



KEY FEATURES

- / Diameters from 3/16 to 1"
- / Hardened
- / OD lead for easy installation
- / ISO 2341B and DIN 1444 B
- / Zinc plated or Stainless steel

APPLICATION

Clevis Pins are a type of fastener that will allow the rotation or swivel of the connected

parts about the axis of the pin linkage. A clevis pin, sometimes referred to as a link pin or hinge pin, consists of a head, shank and cross drilled hole. When using a fastener, such as a clevis pin, the hole which is at the opposite end of the pin to the head is inserted through the items to be linked, and then a cotter pin, R clip or similar retaining fastener is inserted through the hole to fix the clevis pin in place.

ORDERING INSTRUCTIONS

When Ordering State: Quantity, CPSS for Stainless Steel or CPZP for Zinc Plate, followed by diameter required and length. Example: 6, CPSS 1/2" x 2"

NOTES

Stainless clevis pins are manufactured from A2 but other grades can be manufactured upon request.



| Dia | D | 3/16" | 1/4" | 5/16" | 3/8" | 1/2" | 5/8" | 3/4" | 1" |
|-------------|----|--------|--------|--------|--------|--------|--------|--------|---------|
| Head Dia | HD | 5/16" | 3/8" | 7/16" | 1/2" | 5/8" | 11/16" | 15/16" | 1.3/16" |
| Head Width | HW | 1/16" | 3/32" | 3/32" | 1/8" | 5/32" | 13/64" | 1/4" | 11/32" |
| Hole Dia | H | 0.078" | 0.078" | 0.104" | 0.104" | 0.135" | 0.156" | 0.156" | 0.156" |
| Hole Centre | HC | 0.100" | 0.100" | 0.140" | 0.160" | 0.160" | 0.160" | 0.160" | 0.210" |

| L \ D | 3/16" | 1/4" | 5/16" | 3/8" | 1/2" | 5/8" | 3/4" | 1" |
|--------|-------|------|-------|------|------|------|------|----|
| 1/2 | | | | | | | | |
| 5/8" | | | | | | | | |
| 3/4" | | | | | | | | |
| 1" | | | | | | | | |
| 1 1/4" | | | | | | | | |
| 1 1/2" | | | | | | | | |
| 1 3/4" | | | | | | | | |
| 2" | | | | | | | | |
| 2 1/4" | | | | | | | | |
| 2 1/2" | | | | | | | | |
| 2 3/4" | | | | | | | | |
| 3" | | | | | | | | |
| 3 1/4" | | | | | | | | |
| 3 1/2" | | | | | | | | |
| 3 3/4" | | | | | | | | |
| 4" | | | | | | | | |