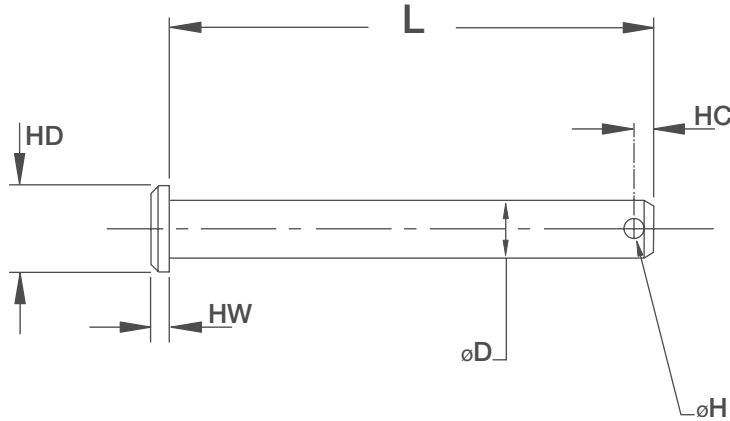


Clevis Pins

Metric Pin to ISO 2341B or DIN 1444B



KEY FEATURES

- / Diameters from 3mm to 24mm
- / Hardened
- / OD lead for easy installation
- / ISO 2341B and DIN 1444 B
- / Zinc plated or Stainless steel

APPLICATION

Clevis Pins are a type of fastener that will allow the rotation or swivel of the connected

parts about the axis of the pin linkage. A clevis pin, sometimes referred to as a link pin or hinge pin, consists of a head, shank and cross drilled hole. When using a fastening, such as a clevis pin, the hole which is at the opposite end of the pin to the head is inserted through the items to be linked, and then a cotter pin, R clip or similar retaining fastener is inserted through the hole to fix the clevis pin in place.

ORDERING INSTRUCTIONS

When Ordering State: Quantity, CPSS for Stainless Steel or CPZP for Zinc Plate, followed by diameter required and length. Example: 6, CPZP 3mm x 30mm

NOTES

Stainless clevis pins are manufactured from A2 but other grades can be manufactured upon request.



Dia	D	3	4	5	6	8	10	12	16	20	24
Head Dia	HD	4.5	6	8	10	14	18	20	25	28	36
Head Width	HW	1.2	1.5	1.6	2	3	4	4	4.5	5	6
Hole Dia	H	1.1	1.2	1.2	1.6	2	3.2	3.2	4	5	6.3
Hole Centre	HC	2.1	2.5	2.9	3.2	3.5	4.5	5.5	6	8	9

L \ D	3	4	5	6	8	10	12	16	20	24
10										
12										
16										
20										
25										
30										
35										
40										
50										
60										
70										
80										
90										
100										