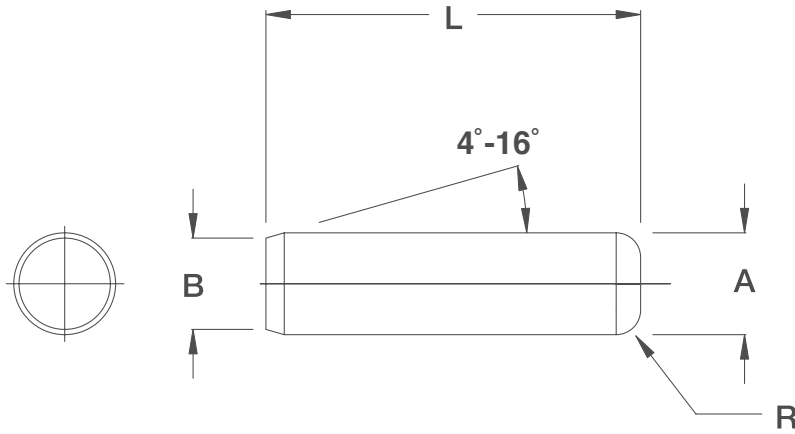


Dowel Pins

INCH Dowel Pins to ASME 18.8.2-2000



$$A = +.0001" / +.0003"$$



KEY FEATURES

- / Precision ground alloy steel
- / Diameters from 1/16 to 1"
- / Surface hardness 60 HRC minimum
- / Core hardness 50-58 HRC
- / Chamfer and Radius
- / Oversize to fit reamed hole

APPLICATION

ANSI standard parallel dowel pins are chamfered at the insertion end for easy location. Dowel pins are ground with accurate tolerances for exact alignment.

NOTES

If you cannot find what you are looking for, Boneham can manufacture special sizes and materials to specification. Other available standards are listed on page 56.

ORDERING INSTRUCTIONS

When ordering identify the nominal diameter required and then choose the length from the chart below. Example: 1/16 x 5/8



B	Nominal Dia A												
	1/16"	3/32"	1/8"	3/16"	1/4"	5/16"	3/8"	7/16"	1/2"	5/8"	3/4"	7/8"	1"
R min	.008	.012	.016	.023	.031	.039	.047	.055	.063	.078	.094	.109	.125
3/16"													
1/4"													
5/16"													
3/8"													
7/16"													
1/2"													
5/8"													
3/4"													
7/8"													
1"													
1 1/4"													
1 1/2"													
1 3/4"													
2"													
2 1/4"													
2 1/2"													
3"													
3 1/2"													
4"													
4 1/2"													
5"													
5 1/2"													
6"													

Additional lengths can be supplied to order.