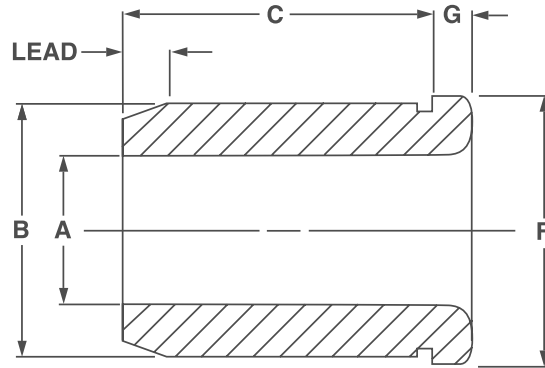


Head Press Fit Drill Bushings

H Type ANSI Drill Bushings



KEY FEATURES

- / Diameters from 0.0156 to 1.7656
- / Hardened to 60-65 HRC
- / OD lead for easy installation
- / ID radius improves drill entry
- / OD ground to press fit size

APPLICATION

The 'H Type' drill bushing features a head which allows for greater axial force, so not to

slip out the plate, or to feed down to a dead stop if required. The head of the bush also allows it to be pressed into the plate easier and can be left either exposed above the plate surface or counterbored to sit flush.

ORDERING INSTRUCTIONS

When Ordering State: Quantity, Symbol, Bore Size and whether it's a Drill or Reamer. Example: 6, H-40-8-5/16

NOTES

- / For general ordering information and technical data see pages 5-7
- / To order Oversize Bushings; suffix symbol with the letter U. Example: H-40-8U-5/16
- / Nitralloy Bushings quoted upon request
- / Price list codes detailed below; please see price list.



| Bore Size A* | Outside Diameter B | C: Length Under Head and Price Code Number | | | | | | | | | | | | Head | | |
|------------------------|-----------------------|--|------|--------------|--------------|--------------|---------------|----------------|----------------|----------------|----------------|--------|----|-----------|-----------|------|
| | | Prefix | 1/4" | 5/16" | 3/8" | 1/2" | 3/4" | 1" | 1 3/8" | 1 3/4" | 2 1/8" | 2 1/2" | 3" | Dia. F | Thk. G | |
| 0.0135 to 0.0280 | 5/32 | 0.1578 0.1575 | H | -10-4 POA | -10-5 POA | -10-6 POA | -10-8 POA | -10-12* POA | | | | | | | 1/4 | 3/32 |
| 0.0292 to 0.0591 | 5/32 | 0.1578 0.1575 | H | -10-4 POA | -10-5 POA | -10-6 POA | -10-8† POA | -10-12* POA | | | | | | | 1/4 | 3/32 |
| 0.0595 to 0.0625 | 5/32 | 0.1578 0.1575 | H | -10-4 211 | -10-5 212 | -10-6 213 | -10-8† 214 | -10-12* 226 | | | | | | | 1/4 | 3/32 |
| 0.0135 to 0.0280 | 13/64 | 0.2046 0.2043 | H | -13-4 POA | -13-5 POA | -13-6 POA | -13-8 POA | -13-12† POA | | | | | | | 19/64 | 3/32 |
| 0.0292 to 0.0591 | 13/64 | 0.2046 0.2043 | H | -13-4 POA | -13-5 POA | -13-6 POA | -13-8† POA | -13-12† POA | | | | | | | 19/64 | 3/32 |
| 0.0595 to 0.0625 | 13/64 | 0.2046 0.2043 | H | -13-4 211 | -13-5 212 | -13-6 213 | -13-8* 214 | -13-12* 226 | -13-16* 264 | | | | | | 19/64 | 3/32 |
| 0.0635 to 0.0995 | 13/64 | 0.2046 0.2043 | H | -13-4 158 | -13-5 159 | -13-6 164 | -13-8 167 | -13-12* 187 | -13-16* 205 | -13-22* 264 | | | | | 19/64 | 3/32 |
| 0.0980 to 0.1406 | 1/4 | 0.2516 0.2513 | H | -16-4 158 | -16-5 152 | -16-6 155 | -16-8 158 | -16-12 183 | -16-16* 207 | -16-22* 252 | | | | | 23/64 | 3/32 |
| 0.1250 to 0.1935 | 5/16 | 0.3141 0.3138 | H | -20-4 134 | -20-5 137 | -20-6 140 | -20-8 142 | -20-12 144 | -20-16* 159 | -20-22* 210 | -20-28* 223 | | | | 27/64 | 1/8 |
| 0.1875 to 0.2570 | 13/32 | 0.4078 0.4075 | H | -26-4 129 | -26-5 130 | -26-6 135 | -26-8 137 | -26-12 140 | -26-16* 153 | -26-22* 164 | -26-28* 190 | | | | 1/2 | 5/32 |

Continued on next page

| Bore Size A* | Outside Diameter B | C: Length Under Head and Price Code Number | | | | | | | | | | | | Head | | | |
|------------------------|-----------------------|--|------|--------------|--------------|--------------|--------------|----------------|----------------|----------------|----------------|----------------|----------------|----------------|-----------|---------|------|
| | | Prefix | 1/4" | 5/16" | 3/8" | 1/2" | 3/4" | 1" | 1 3/8" | 1 3/4" | 2 1/8" | 2 1/2" | 3" | Dia. F | Thk. G | | |
| 0.1875 to 0.3160 | 1/2 | 0.5017 0.5014 | H | -32-4 129 | -32-5 130 | -32-6 135 | -32-8 137 | -32-12 140 | -32-16 153 | -32-22* 165 | -32-28* 190 | | | | | 39/64 | 7/32 |
| 0.3125 to 0.4375 | 5/8 | 0.6267 0.6264 | H | -40-4 135 | -40-5 129 | -40-6 130 | -40-8 130 | -40-12 135 | -40-16 140 | -40-22 164 | -40-28 183 | -40-34 194 | | | | 51/64 | 7/32 |
| 0.3125 to 0.5312 | 3/4 | 0.7518 0.7515 | H | -48-4 140 | -48-5 134 | -48-6 135 | -48-8 135 | -48-12 140 | -48-16 146 | -48-22 167 | -48-28 186 | -48-34 196 | | | | 59/64 | 7/32 |
| 0.5000 to 0.6562 | 7/8 | 0.8768 0.8765 | H | | | | -56-8 149 | -56-12 151 | -56-16 153 | -56-22 161 | -56-28 189 | -56-34 196 | -56-40 212 | | | 1-7/64 | 1/4 |
| 0.5000 to 0.7656 | 1 | 1.0018 1.0015 | H | | | | -64-8 152 | -64-12 152 | -64-16 158 | -64-22 164 | -64-28 193 | -64-34 206 | -64-40 221 | -64-48 318 | | 1-15/64 | 5/16 |
| 0.6250 to 1.0312 | 1-3/8 | 1.3772 1.3768 | H | | | | -88-8 199 | -88-12 192 | -88-16 200 | -88-22 208 | -88-28 222 | -88-34 237 | -88-40 291 | -88-48 335 | | 1-39/64 | 3/8 |
| 1.1000 to 1.3906 | 1-3/4 | 1.7523 1.7519 | H | | | | | -112-12 227 | -112-16 217 | -112-22 227 | -112-28 240 | -112-34 294 | -112-40 307 | -112-48 347 | | 1-63/64 | 3/8 |
| 1.3750 to 1.7656 | 2-1/4 | 2.2525 2.2521 | H | | | | | | -144-16 276 | -144-22 302 | -144-28 322 | -144-34 332 | -144-40 339 | -144-48 357 | | 2-31/64 | 3/8 |

* Standard bore sizes available are per chart shown in rear of catalog – including LETTER, NUMBER and FRACTIONAL SIZES.

MILLIMETER – from 2.3 mm to 10.5 mm only for selected list designated by on back cover.

• COUNTERBORED – with adequate bearing length – can also be supplied without counterbore upon request.

† COUNTERBORED – 0.0390 to 0.0469 with adequate bearing length; can also be supplied without counterbore upon request.

* Price on Application, prices subject to change.