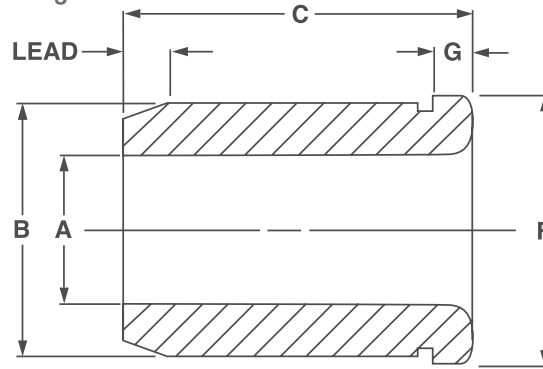


# Head Press Fit Drill Bushings

## HM Type ANSI Metric Bushings



### KEY FEATURES

- / Diameters from 1.50mm to 105mm
- / Hardened to 60-65 HRC
- / OD lead for easy installation
- / ID radius improves drill entry
- / OD ground to press fit size

slip out the plate, or to feed down to a dead stop if required. The head of the bush also allows it to be pressed into the plate easier and can be left either exposed above the plate surface or counterbored to sit flush.

### NOTES

- / For general ordering information and technical data see pages 5-7
- / To order Oversize Bushings; suffix symbol with the letter U. Example: HM-10-10U-6MM
- / Nitralloy Bushings quoted upon request
- / Price list codes detailed below; please see price list.

### APPLICATION

The 'HM Type' drill bushing features a head which allows for greater axial force, so not to

### ORDERING INSTRUCTIONS

When Ordering State: Quantity, Symbol, Bore Size and whether it's a Drill or Reamer.  
Example: 6, HM-10-10-6MM



Bore Size Range From - To A (mm)	Outside Diameter B (mm)	C (mm): Headed Press Fit & Liners (HM & HLM) Symbol: Type - OD - Length												F	G
		Prefix	8mm	10mm	12mm	16mm	20mm	25mm	28mm	36mm	45mm	56mm	67mm		
1.500 - 1.800		HM	POA	POA	POA	POA	POA	POA	POA	POA	POA	POA	POA		2
1.801 - 2.600															
2.601 - 3.300	6 6.027-6.019	HM	-6-8 190		-6-12 193	-6-16 211								9	2.5
3.301 - 4.000	7 7.032-7.023	HM	-7-8 161		-7-12 170	-7-16 185								10	2.5
4.001 - 5.000	8 8.032-8.023	HM	-8-8 161		-8-12 170	-8-16 185								11	2.5
5.001 - 6.000	10 10.032-10.023	HM		-10-10 161		-10-16 169	-10-20 208							13	3
6.001 - 8.000	12 12.039-12.028	HM		-12-10 161		-12-16 169	-12-20 191							15	3
8.001 - 10.000	15 15.039-15.028	HM			-15-12 156		-15-20 169	-15-25 170						18	3
10.001 - 12.000	18 18.039-18.028	HM			-18-12 161		-18-20 169	-18-25 185						22	4
12.001 - 15.000	22 22.048-22.035	HM				-22-16 190			-22-28 199	-22-36 206				26	4
15.001 - 18.000	26 26.048-26.035	HM				-26-16 190			-26-28 194	-26-36 213				30	4
18.001 - 22.000	30 30.048-30.035	HM					-30-20 221			-30-36 294	-30-45 304			34	5
22.001 - 26.000	35 35.059-35.043	HM					-35-20 223			-35-36 296	-35-45 305			39	5
26.001 - 30.000	42 42.059-42.043	HM						-42-25 300			-42-45 305	-42-56 349		46	5
30.001 - 35.000	48 48.059-48.043	HM						-48-35 304			-48-45 327	-48-56 348		52	5
35.001 - 42.000	55 55.072-55.053	HM						-55-30 342				-55-56 359	-55-67 360	59	5
42.001 - 48.000															
48.001 - 55.000															
55.001 - 63.000			POA	POA	POA	POA	POA	POA	POA	POA	POA	POA	POA		
63.001 - 78.000															

\* Price on Application, prices subject to change.