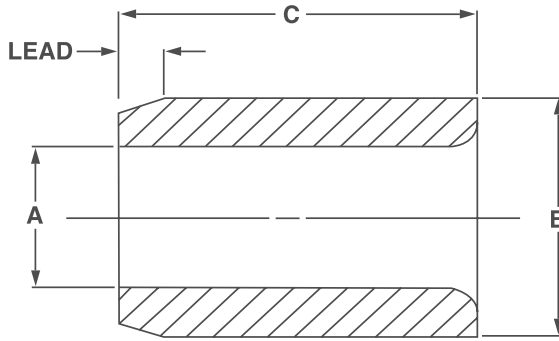




Headless Liner Drill Bushings

LTW Type Thin Wall Liner



KEY FEATURES

- / Diameters from 5/16 to 2 1/4
- / Hardened to 60-65 HRC
- / OD lead for easy installation
- / ID radius improves SF location
- / OD ground to press fit size
- / Thin wall space saving feature

APPLICATION

The 'LTW Type' liner bushing is permanently pressed into a drill jig or fixture plate. They provide a highly accurate location sleeve for the SF drill bushing whilst eradicating wear caused by drill bush replacement on the jig plate. The thin wall allows for greater space on the jig.

ORDERING INSTRUCTIONS

When Ordering State: Quantity and Symbol.
Example: 6, L-TW-40-4

NOTES

- / For general ordering information and technical data see pages 5-7
- / To order Oversize Bushings; suffix symbol with the letter U. Example: L-TW-28-6U
- / Price list codes detailed below; please see price list.



Bore Size A	Outside Diameter B	C: Liner Length and Price Code Number													
		Prefix	1/4"	5/16"	3/8"	1/2"	5/8"	3/4"	1"	1 1/4"	1 1/2"	1 3/4"	2"	2 1/4"	
3/16	0.1879	5/16	L-TW	-20-4	-20-5	-20-6	-20-8	-20-10	-20-12						
	0.1876			123	126	129	130	134	135						
1/4	0.2504	7/16	L-TW	-28-4	-28-5	-28-6	-28-8	-28-10	-28-12						
	0.2501			118	119	122	123	126	129						
5/16	0.3129	9/16	L-TW	-36-4	-36-5	-36-6	-36-8	-36-10	-36-12	-36-16					
	0.3126			123	118	120	120	122	123	126					
3/8	0.3754	5/8	L-TW	-40-4	-40-5	-40-6	-40-8	-40-10	-40-12	-40-16					
	0.3751			123	118	120	120	122	123	126					
7/16	0.4380	5/8	L-TW	-40-4X	-40-5X	-40-6X	-40-8X	-40-10X	-40-12X	-40-16X					
	0.4377			123	118	120	120	122	123	126					
9/16	0.5630	7/8	L-TW	-56-4	-56-5	-56-6	-56-8	-56-10	-56-12	-56-16					
	0.5627			140	138	140	134	135	135	138					
5/8	0.6255	7/8	L-TW		-56-5X	-56-6X	-56-8X	-56-10X	-56-12X	-56-16X	-56-20X				
	0.6252				138	140	134	135	135	138	144				

Continued on next page

Bore Size A	Outside Diameter B		C: Liner Length and Price Code Number													
			Prefix	1/4"	5/16"	3/8"	1/2"	5/8"	3/4"	1"	1 1/4"	1 1/2"	1 3/4"	2"	2 1/4"	
3/4	0.7506	1	1.0018	L-TW		-64-5	-64-6	-64-8	-64-10	-64-12	-64-16	-64-20				
	0.7503		1.0015				138	140	135	135	135	139	144			
7/8	0.8757	1-1/4	1.2520	L-TW			-80-6	-80-8	-80-10	-80-12	-80-16	-80-20	-80-24			
	0.8754		1.2517				169	169	164	155	169	188	192			
1	1.0007	1-3/8	1.3772	L-TW				-88-8	-88-10	-88-12	-88-16	-88-20	-88-24	-88-28		
	1.0004		1.3768					170	167	155	170	189	193	201		
1-1/8	1.1259	1-1/2	1.5022	L-TW				-96-8	-96-10	-96-12	-96-16	-96-20	-96-24	-96-28		
	1.1255		1.5018					190	190	196	189	196	203	206		
1-1/4	1.2509	1-5/8	1.6272	L-TW					-104-10	-104-12	-104-16	-104-20	-104-24	-104-28	-104-32	
	1.2505		1.6268						190	195	195	195	200	206	217	
1-3/8	1.3760	1-3/4	1.7523	L-TW					-112-10	-112-12	-112-16	-112-20	-112-24	-112-28	-112-32	
	1.3756		1.7519						196	196	189	196	200	206	222	
1-1/2	1.5010	1-7/8	1.8773	L-TW						-120-12	-120-16	-120-20	-120-24	-120-28	-120-32	-120-36
	1.5006		1.8769							195	195	195	200	198	218	225

Boneham Metal Products, Inc. drill bushings are guaranteed against defects in materials or workmanship. The tolerances of our products are guaranteed to confirm to either ANSI, ISO or catalog standards.