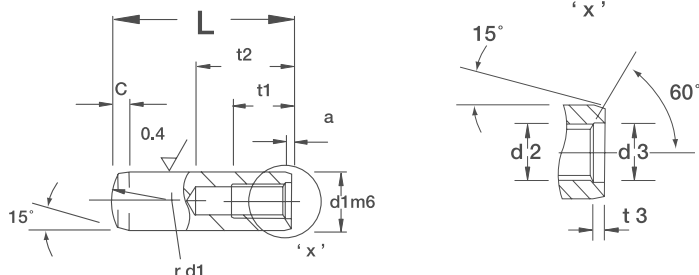


Pull Dowel Pins

Metric Pull Dowel Pins

Diam d1 = m6 Limit hardened



Supplied with or without air release flat.



KEY FEATURES

- / Precision ground alloy steel
- / Diameters from 5mm to 25mm
- / Hardness 60-63 HRC
- / Chamfer and Radius

for exact alignment. The internal thread allows for extraction by a tool (see page 53). They can be supplied with or without air release flats. Air release flats are ground on the dowel pin to allow for air displacement in blind holes.

NOTES

If you cannot find what you are looking for, Boneham can manufacture special sizes and materials to specification. Other available standards are listed on page 56.



APPLICATION

Metric pull dowels are chamfered and chamfer dome for easy location and installation. Pull dowel pins are ground with accurate tolerances

ORDERING INSTRUCTIONS

When ordering identify the nominal diameter required and then choose the length from the chart below. Example: 8mm x 32mm

d1	m6		5	6	8	10	12	16	20	25
a	≈		.6	0.8	1	1.2	1.6	2	2.5	3
c			2.0	2.1	2.6	3	3.8	4.6	6	6
d2			M2.5 / M3	M4	M5	M6	M6	M8	M10	M16
d3			3.3	4.3	5.3	6.4	6.4	8.4	10.5	17
t1			5	6	8	10	12	16	18	24
t2	min.		9	10	12	16	20	25	28	35
t3			.75	1	1.2	1.2	1.2	1.5	1.5	2
L										
nom.	min.	max.								
10	9.5	10.5								
16	15.5	16.5								
18	17.5	18.5								
20	19.5	20.5								
22	21.5	22.5								
24	23.5	24.5								
25	24.5	25.5								
28	27.5	28.5								
30	29.5	30.5								
32	31.5	32.5								
35	34.5	35.5								
40	39.5	40.5								
45	44.5	45.5								
50	49.5	50.5								
55	54.25	55.75								
60	59.25	60.75								
65	64.25	65.75								
70	69.25	70.75								
75	74.25	75.75								
80	79.25	80.75								
85	84.25	85.75								
90	89.25	90.75								
95	94.25	95.75								
100	99.25	100.75								
120	119.25	120.75								