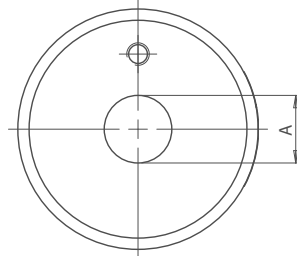
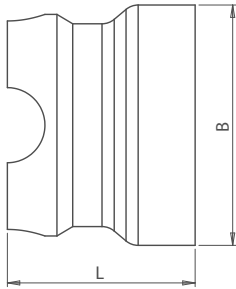


# Egg Cup Bushing

## Right Angle Drill Bushing Fixture



### KEY FEATURES

- / Ideal for drilling sheet metal
- / Red Anodised Aluminium
- / For Standard Renewable Bushings
- / Etched Part Code
- / Etched Size Range

### APPLICATION

Boneham "Egg Cup" style drill bushing fixtures are designed to provide an accurate and portable drilling fixture. This drilling solution is ideal for sheet metal applications including piloting, drilling and reaming for rivets. Interchangeable with traditional Boneham

drill bushings and lock screws. No need for a separate range of drill bushings or liners.

### ORDERING INSTRUCTIONS

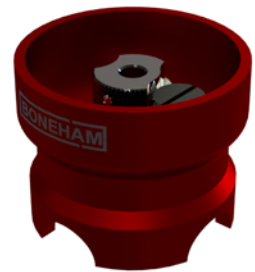
When ordering identify the OD size required based on the standard drill range.

For example:

- / 1/4" drilled hole: SF-32-16 .2500 bushing required and an Egg Cup part of ECB-500

### NOTES

- / Nylon version available
- / Specials Manufactured by BONEHAM



## INCH

Part Code	Fixture ID (A)	To Suit Bushing ID Range	Diameter (B)	Height (L)
ECB-500	0.500"	5/32" - 11/32"	64mm	50mm

## METRIC

Part Code	Fixture ID (A)	To Suit Bushing ID Range	Diameter (B)	Height (L)
ECB-8	8mm	1mm - 4mm	64mm	50mm
ECB-10	10mm	3.7mm - 6mm	64mm	50mm
ECB-12	12mm	5.7mm - 8mm	64mm	50mm
ECB-15	15mm	7.7mm - 10mm	64mm	50mm
ECB-18	18mm	9.6mm - 12mm	64mm	50mm