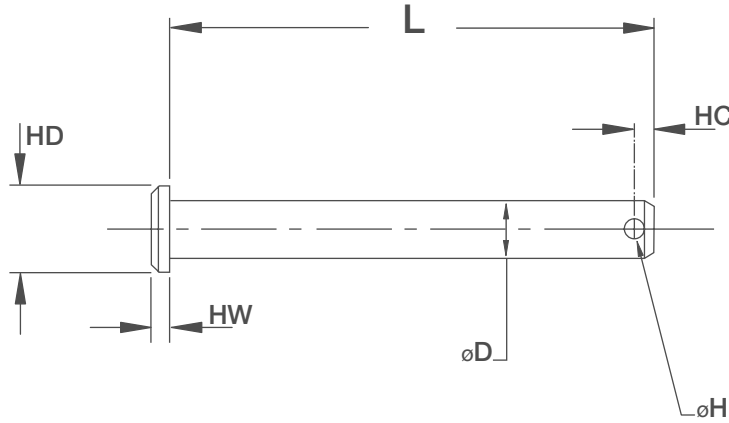


Clevis Pins

INCH Pin to ANSI Sizes



KEY FEATURES

- / Diameters from 3/16 to 1"
- / Hardened
- / OD lead for easy installation
- / ISO 2341B and DIN 1444 B
- / Zinc plated or Stainless steel

APPLICATION

Clevis Pins are a type of fastener that will allow the rotation or swivel of the connected

parts about the axis of the pin linkage. A clevis pin, sometimes referred to as a link pin or hinge pin, consists of a head, shank and cross drilled hole. When using a fastener, such as a clevis pin, the hole which is at the opposite end of the pin to the head is inserted through the items to be linked, and then a cotter pin, R clip or similar retaining fastener is inserted through the hole to fix the clevis pin in place.

ORDERING INSTRUCTIONS

When Ordering State: Quantity, CPSS for Stainless Steel or CPZP for Zinc Plate, followed by diameter required and length. Example: 6, CPSS 1/2" x 2"

NOTES

Stainless clevis pins are manufactured from A2 but other grades can be manufactured upon request.



Dia	D	3/16"	1/4"	5/16"	3/8"	1/2"	5/8"	3/4"	1"
Head Dia	HD	5/16"	3/8"	7/16"	1/2"	5/8"	11/16"	15/16"	1.3/16"
Head Width	HW	1/16"	3/32"	3/32"	1/8"	5/32"	13/64"	1/4"	11/32"
Hole Dia	H	0.078"	0.078"	0.104"	0.104"	0.135"	0.156"	0.156"	0.156"
Hole Centre	HC	0.100"	0.100"	0.140"	0.160"	0.160"	0.160"	0.160"	0.210"

L \ D	3/16"	1/4"	5/16"	3/8"	1/2"	5/8"	3/4"	1"
1/2								
5/8"								
3/4"								
1"								
1 1/4"								
1 1/2"								
1 3/4"								
2"								
2 1/4"								
2 1/2"								
2 3/4"								
3"								
3 1/4"								
3 1/2"								
3 3/4"								
4"								