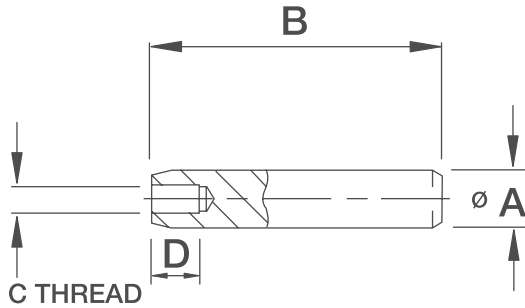


Pull Dowel Pins

INCH Pull Dowel Pins

Diam A = + .0001" / + .0003"
hardened 60-63 Rc



Supplied with or without air release flat.



KEY FEATURES

- / Precision ground alloy steel
- / Diameters from 3/16 to 1"
- / Surface hardness 60-63 HRC
- / Core hardness 50-58 HRC
- / Chamfer and Radius

APPLICATION

Pull dowel pins are chamfered at both ends for easy location into the hole. Pull dowel pins are ground with accurate tolerances for exact alignment. The internal thread allows for extraction by a tool (see page*). They can be supplied with or without air release flats. Air release flats are ground on the dowel pin to allow for air displacement in blind holes.

ORDERING INSTRUCTIONS

When ordering identify the nominal diameter required and then choose the length from the chart below. Example: 1/4" x 1"

NOTES

If you cannot find what you are looking for, Boneham can manufacture special sizes and materials to specification. Other available standards are listed on page 66.



Diam A	3/16"	1/4"	5/16"	3/8"	1/2"	5/8"	3/4"	1"
1/2"								
5/8"								
3/4"								
1"								
1 1/4"								
1 1/2"								
1 3/4"								
2"								
2 1/4"								
2 1/2"								
3"								
C Thread	4-40	8-32	10-32	10-32	1/4-20	5/16-18	5/16-18	5/16-18
D	1/4"	1/4"	1/4"	3/8"	1/2"	1/2"	1/2"	1/2"