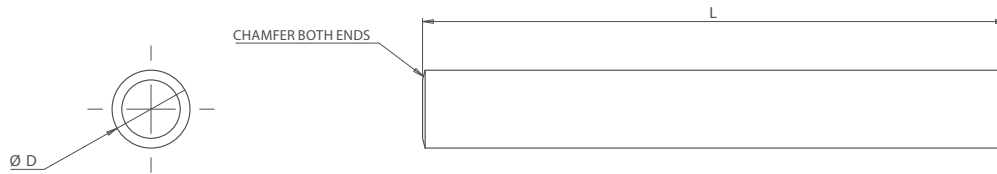


# Nylon Dowel Pins

## Nylon 66 Dowel Pins



### KEY FEATURES

- / White Nylon 6.6
- / Tough and Rigid
- / Excellent Abrasion and Chemical Resistance
- / Low Friction Coefficient

### APPLICATION

Nylon dowels are ideal for the composite mould process. They have a wide temperature range (-40°C - +70°C) with good chemical and

abrasive qualities. Boneham Nylon dowels work in vacuum environments and unlike traditional metal dowels, can easily be destroyed to prevent damage to the mould or workpiece.

### ORDERING INSTRUCTIONS

When ordering identify the diameter and length required and choose the appropriate part number.

### NOTES

- / Can be used with Boneham GS bushings or -BP mould bushings
  - / Specials, including tighter tolerances
- Manufactured by BONEHAM.



D	3	4	6	8	10
L	+ /- 0.01	+ /- 0.01	0.00	0.00	0.00
+ 0.1			+ 0.02	+ 0.02	+ 0.02
20					
30					
35					
40					
45					
50					
55					
60					