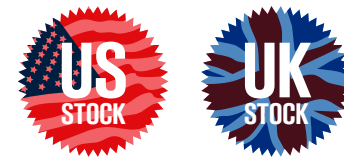
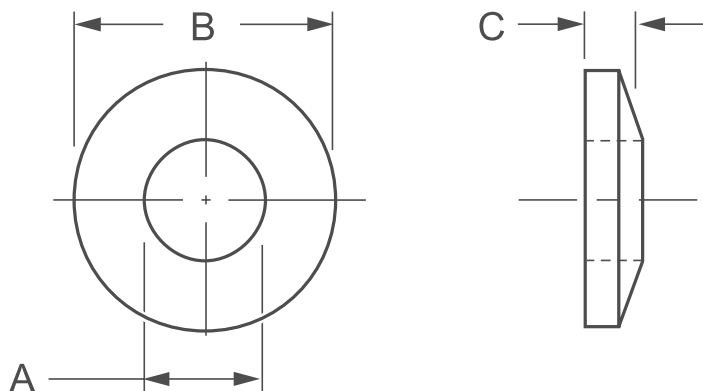


Spherical Washers

Top Washer



BONEHAM

KEY FEATURES

- / Case hardened (Steel)
- / Black oxide finish
- / Stainless are 300 series and natural finish
- / Hole to fit bolts and studs

APPLICATION

Boneham's 'SWT Type' spherical washers are designed to aid even fastening between parts with irregular alignment. The 'Top' washer features a convex spherical radius for aligning in the concaved bottom.

ORDERING INSTRUCTIONS

When ordering identify the bolt size required and use the corresponding part number. Example: SWT08

NOTES

Boneham sells spherical washers separately, please turn to page 89 for the bottom washer.



Steel Spherical Washer Top

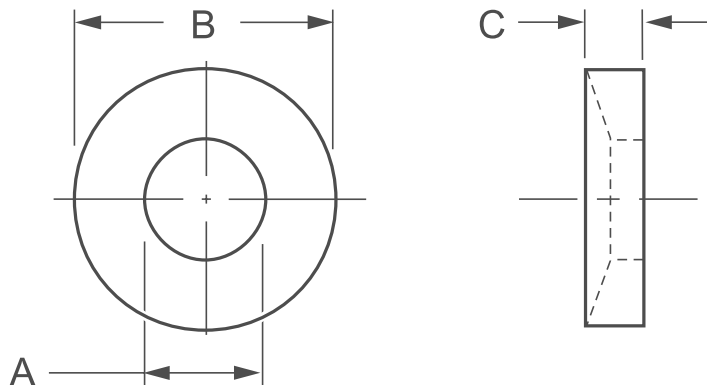
Part No.	Dimensions			Bolt Size
	A + / - 0.15	B + / - 0.15	C + / - 0.15	
SWT01	9/32	5/8	1/8	3/16 & 1/4
SWT02	11/32	3/4	5/32	5/16
SWT03	13/32	7/8	9/64	3/8
SWT04	17/32	1-1/8	3/16	7/16 & 1/2
SWT05	21/32	1-3/8	3/16	5/8
SWT06	25/32	1-5/8	7/32	3/4
SWT07	15/16	1-3/4	1/4	7/8
SWT08	1-1/16	2	11/32	1
SWT09	1-3/16	2-1/4	19/64	1-1/8
SWT10	1-5/16	2-5/8	11/32	1-1/4
SWT11	1-9/16	2-7/8	23/64	1-1/2

Stainless Steel Spherical Washer Top

Part No.	Dimensions			Bolt Size
	A + / - 0.15	B + / - 0.15	C + / - 0.15	
SWT01SS	9/32	5/8	1/8	3/16 & 1/4
SWT02SS	11/32	3/4	5/32	5/16
SWT03SS	13/32	7/8	9/64	3/8
SWT04SS	17/32	1-1/8	3/16	7/16 & 1/2
SWT05SS	21/32	1-3/8	3/16	5/8
SWT06SS	25/32	1-5/8	7/32	3/4
SWT07SS	15/16	1-3/4	1/4	7/8
SWT08SS	1-1/16	2	11/32	1

Spherical Washers – Bottom

Bottom Washer



KEY FEATURES

- / Case hardened (Steel)
- / Black oxide finish
- / Stainless are 300 series and natural finish
- / Hole to fit bolts and studs

APPLICATION

Boneham's 'SWB Type' spherical washers are designed to aid even fastening between parts with irregular alignment. The 'bottom' washer features a concave spherical radius for aligning with the convexed top.

ORDERING INSTRUCTIONS

When ordering identify the bolt size required and use the corresponding part number. Example: SWB09

NOTES

Boneham sells spherical washers separately, please turn to page 88 for the top washer.



Steel Spherical Washer Bottom

Part No.	Dimensions			Bolt Size
	A + / - 0.15	B + / - 0.15	C + / - 0.15	
SWB01	5/16	5/8	1/8	3/16 & 1/4
SWB02	3/8	3/4	5/32	5/16
SWB03	7/16	7/8	5/32	3/8
SWB04	9/16	1-1/8	7/32	7/16 & 1/2
SWB05	11/16	1-3/8	7/32	5/8
SWB06	13/16	1-5/8	9/32	3/4
SWB07	1	1-3/4	1/4	7/8
SWB08	1-1/8	2	5/16	1
SWB09	1-1/4	2-1/4	11/32	1-1/8
SWB10	1-3/8	2-5/8	23/64	1-1/4
SWB11	1-5/8	2-7/8	27/64	1-1/2

Stainless Steel Spherical Washer Bottom

Part No.	Dimensions			Bolt Size
	A + / - 0.15	B + / - 0.15	C + / - 0.15	
SWB01SS	5/16	5/8	1/8	3/16 & 1/4
SWB02SS	3/8	3/4	5/32	5/16
SWB03SS	7/16	7/8	5/32	3/8
SWB04SS	9/16	1-1/8	7/32	7/16 & 1/2
SWB05SS	11/16	1-3/8	7/32	5/8
SWB06SS	13/16	1-5/8	9/32	3/4
SWB07SS	1	1-3/4	1/4	7/8
SWB08SS	1-1/8	2	5/16	1